



Volume 22 – 12

www.FlyingClub1.org

December 2022



## The Privileged View

Steve Beste, President

**Mark Barron's electric PPG.** Mark Barron brought his new electric PPG rig to the November meeting. It was the hit of the day as everyone gathered around taking pictures and asking questions. Michael Bishton even put a video of it up on [YouTube](#), complete with annotations. Watch it to see what you missed.

The big disadvantage of this electric paramotor compared with an ICE (internal combustion engine) paramotor, is that the battery lasts for only one hour. A typical ICE rig can run for two hours. Charging time is 4 hours. A spare battery pack is \$4,000, so runtime remains a limitation. After that, though, the electric motor has all the advantages.



*Mark Barron leans into his PPG. Leaves scatter.*



- **Easy starting.** With the electric paramotor, you push the button and it goes. No warming it up, no wondering if it will restart at altitude.
- **Reliability.** If you want to fly a PPG, you're going to become a small-engine mechanic. Carburetors, exhaust cracks, spark plugs, fuel filters – it seems that the PPG pilots I know are forever having to futz with their engines. By contrast, the electric paramotor has one moving part.
- **Low cost.** At \$7,000, Mark's OpenPPG SP140 cost less than a similar-powered ICE machine (say, \$8,500). Plus, after the initial cost, he won't be paying for overhauls and replacement parts.
- **Safety.** We've had incidents where pilots lost fingers while trying to warm up and adjust their motors on the ground. With electric, you don't even need to start the motor until you've kited up.



*Bob Chapman photographs the rig*

To read more about Mark's paramotor, go to the [OpenPPG website](#).

In the picture, the battery is the gray brick with the red top. It weighs 40 pounds, more than the rest of the machine, which is only 35 pounds. The battery slides easily out the top.

The hand controller displays charge remaining, duration, and altitude.

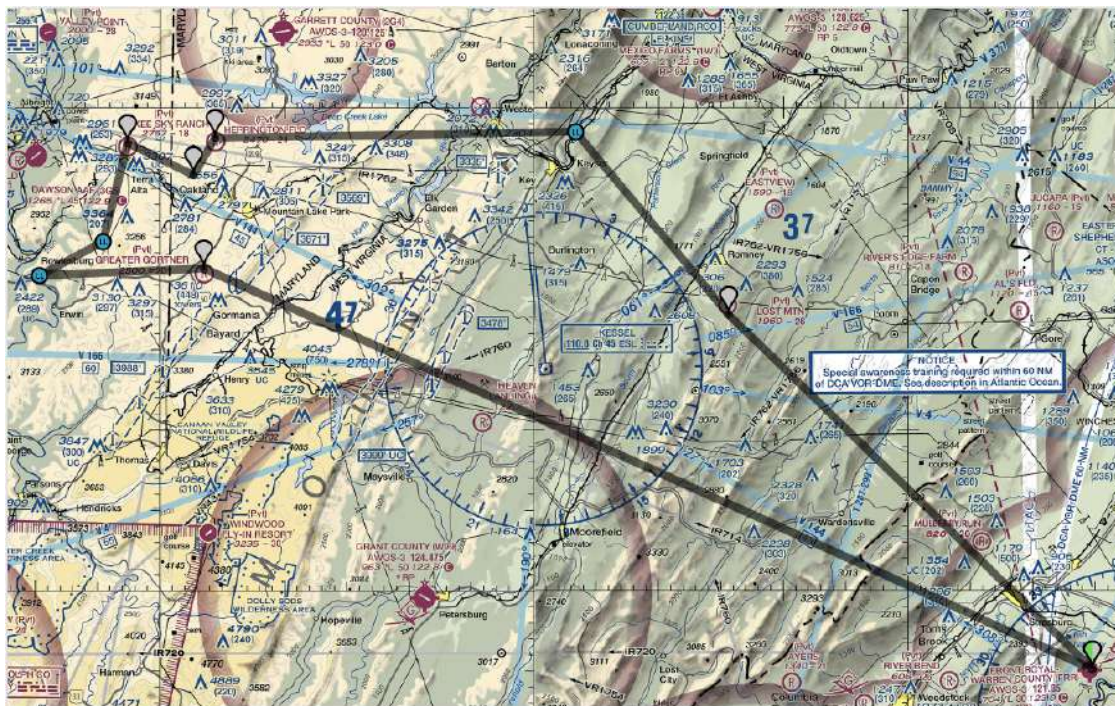




**Alan White pitches back-country flying.** I hope you caught the AOPA webinar where Alan White and friends talked about back-country flying in the East. More: I hope he inspired you to fly to some of those fields. After listening to him, I'm planning a flight next spring to those two West Virginia fields, **High Rock** and **Cheat River** that are on the [RAF map](#) but not the sectionals. As I usually do, I'll



stop at every other grass field (📍) enroute that will have me. Here's what that looks like. I fly at 57mph, so this would be about a 5-hour flight, allowing a 15-minute stop at each field. Anyone want to join me on some very low-wind day? (Inspect this route interactively in [iFlightPlanner](#).)



**Dre Sarchi sells his trike.** Some of you may remember Dre Sarchi. He kept a RevX trike at the Airpark in Tom's last days there. But he's an Air Force doctor, was posted overseas for most of a year, and stored his trike in a trailer. Now returned, he found that he doesn't fly it much. He's sold it and bought a Cessna 150 that he's keeping at Stafford while he learns to fly it.



Before that, however, he had an amazing 5-day (!) BFR with trike manufacturer Larry Mednick in Florida. His [video](#) shows some of the weather he flew in.

Fly safely,  
Steve



## This Month's Fly-In Destinations

To encourage all of us to get in the air more, the following is a list of fly-ins I found within (about) 100 NM of the Lost Griz Aerodrome which are occurring in the next month. Sources are: The [EAA Calendar of Events](#), [www.socialflight.com](http://www.socialflight.com), [funplacestofly.com](http://funplacestofly.com) and the [Virginia Department of Aviation Calendar of Events](#).

| Date                     | Event Description   | Location                                 | Distance from 7VG0 |
|--------------------------|---|--|--------------------|
| Sat, Nov 26 / 8-10AM     | EAA Chapter 339 Pancake Breakfast   | Chesapeake Regional Airport (KCPK)       | 138 NM             |
| Sat, Dec 3 / 9AM-12:30PM | AOPA Rusty Pilots Seminar   | Frederick Municipal Airport (KFDK)       | 50 NM              |
| Sun, Dec 4 / 10AM-3PM    | Massey Open Hangar Party & Fly-In   | Massey Aerodrome (MD1)                   | 100 NM             |
| Sat, Dec 10 / 5PM        | CALF Christmas Party. Bring a dish to share and a wrapped git for the exchange.                     | Eyler's Field (39.458318, 77.266418)     | 54 NM              |
| Sat, Dec 10 / 10AM-12PM  | Winter Operations and Safety on the Ground. See <a href="#">website</a> .                           | Williamsburg-Jamestown Airport (KJGG)    | 99 NM              |
| Sat, Dec 10 / 8-11AM     | EAA 518 Fly-in Drive-in Breakfast   | Mifflin County Airport (KRVL)            | 121 NM             |
| Sat, Dec 17 / 11AM-12PM  | EAA Chapter 1563 Monthly Meeting  | Gordonsville Municipal Airport (KGVE)    | 35 NM              |
| Sun, Dec 18 / 9AM-1PM    | Fly-in Farmers' Market  | St. Mary's County Regional Airport (2W6) | 62 NM              |
| Sat, Jan 14 / 8-11AM     | EAA 518 Fly-in Drive-in Breakfast   | Mifflin County Airport (KRVL)            | 121 NM             |
| Sat, Jan 21 / 11AM-12PM  | EAA Chapter 1563 Monthly Meeting  | Gordonsville Municipal Airport (KGVE)    | 35 NM              |
| Sat, Jan 21 / 10AM-12PM  | Flight Instructor Security Awareness Training. Registration required. See <a href="#">website</a> . | Piper Memorial Airport (KLHV)            | 150 NM             |
| Sat, Jan 28 / 8-10AM     | EAA Chapter 339 Pancake Breakfast   | Chesapeake Regional Airport (KCPK)       | 138 NM             |

Don't forget that there are several great local flying destinations with restaurants on or near the airport. Did I miss some? Let me know!

- Shannon Airport (KEZF) - On the field: Robin's Nest Cafe (closed Sundays), Walkable: Wawa, Perfect Pollo
- Sky Bryce Airport (VG18) - Across the street at the ski slope: Copper Kettle (closed Mon/Tue)
- Cumberland Airport (KCBE) - On the field: Hummingbird Cafe (closed Mondays)
- Richmond Exec Chesterfield (KFCI) - On the field: Kings Korner (closed Saturdays)
- Eastern West Virginia Regional Airport (KMRB) (towered) - On the field: Crosswinds Cafe (closed Sundays)
- Hagerstown Regional Airport (KHGR) (towered) - On the field: The Grille at Runways
- Front Royal-Warren County Airport (KFRR) - 20 minute walk: 619 Market
- Williamsburg-Jamestown Airport (KJGG) - On the field: Charly's

Also, check out the map created by our very own Club President, Steve Beste on the [Flying Club 1 website!](#)



# Time to Party!

## The Flying Club 1 Holiday Party

Celebrate at the terminal building of the Warrenton-Fauquier Airport.

Time; Noon to 3pm on December 3, 2022.

It's a Pot Luck lunch, beverages provided by the Club.

More information call; Steve Beste 703-321-9110





# MASSEY



## AERODROME

## & MASSEY AIR MUSEUM

**WELCOMES EVERYONE TO THE  
MASSEY OPEN  
HANGAR PARTY & FLY-IN**

**Sunday Dec. 4, 2022 11 A.M. to 3 P.M.**

**General Public is invited to our Annual Open Hangar Party**

**Rain or Shine!** - Help us celebrate our progress and new projects.

Friends can bring a covered dish or dessert item (optional) and the airport supplies the main course, cider, lemonade & coffee.

**Tour the Air Museum, Hangars and DC-3**

If you have a motorcycle, vintage car or hot rod, come early, park up front around the DC-3 for everyone to see & admire.

Remember it's the **FIRST SUNDAY** of December! 11 A.M. to 3 P.M.

**Everyone Welcome! Free Admission.**

410-928-5270 - Website: <http://masseyaero.org>

**SCAN ME!**





## From Our Members

JJ Campbell sends us these pictures of Mark Barron flying his electric PPG at last month's meeting. Looks like fun!





To remind us all of warmer, sunnier times, here are some pictures of Monty Betts' beautiful Chief. These were taken by Steve Beste over the summer when he and Monty flew the Poker Run course the Monday after the second cancellation due to weather.



## Quiz

Not only was Jim Heidish the only one to correctly identify last month's tricky quiz from Steve as White Post Airport (3VA7), but he was also able to complete the extra credit question and sends [this link to Google Maps centered on the horse barn in Steve's photo](#). The extra credit was a trick question though! As Jim noted: "The field is White Post (private) & along side RR tracks next to big green rectangle and water tower. Also the barn with the red clay in Steve's image is NEW! Not on satellite image!"

This month's quiz picture was submitted by Steve Beste. He asks "What bridge is this?" and gives us two clues:

- *Over the river and through the woods / to grandmother's house we go.* But only if grandmother lives in Maryland.
- It's not the 301 Bridge.



Know the answer or have a picture for the guessing game? Email me at [ooi.lucy@gmail.com](mailto:ooi.lucy@gmail.com).



## Why Aviation Electric Motors are Flat

*By Steve Beste*

At the November meeting, Mark Barron demonstrated his new electric PPG rig. (If you missed it, watch this [video](#) of the demo from Michael Bishton.) You'll notice that the proportions of the motor are relatively flat, like a tuna can.

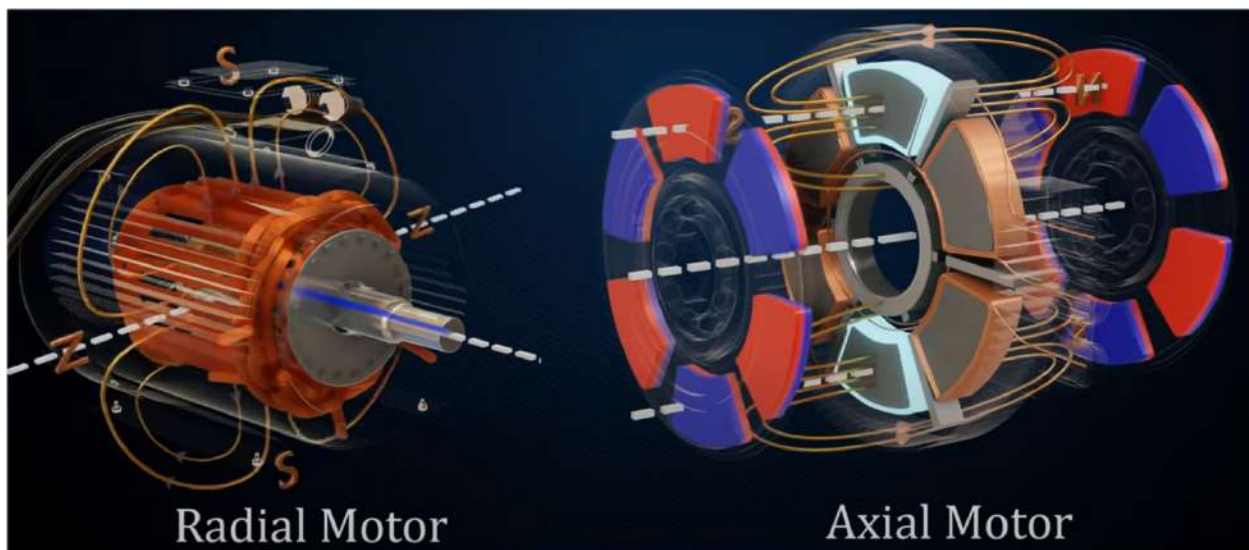


By contrast, most electric motors have the proportions of a soup can:



Why the difference? Mark's motor is an *axial-flux motor*, whereas most motors are *radial-flux*. Comparing the two, axial-flux motors offer **higher torque**, **lower weight**, and more **rapid speed changes**. But they can be more expensive to manufacture. The upshot is that all the motors I've seen on airplanes look to be axial-flux designs.

If you want to dig into this more, this [6-minute video](#) does a good job of explaining the difference – and why axial-flux motors are what we'll see in aviation while your Tesla uses radial-flux motors.



# Meeting Minutes

*November 2022*

## *Flying Club One Meeting*

Saturday, November 12, 2022

Lost Griz Aerodrome (7VG0)

Warrenton, VA

### **Call to Order**

*President* **Steve Beste** called the meeting to order at 11:10 AM with 15 attendees.

### **Visitors and New Members**

None

### **Old Members**

**Mark Barron** showed the group his new SP 140 OpenPPG 4kwh Electric Paramotor. Mark also announced that the local PPG pilots have begun progressing towards using aviation band radios to enhance safety.

**JJ Campbell** announced that one of the Maryland 3, Washington Executive/Hyde Field (W32), has been ordered by the Maryland Bankruptcy Court to sell. Operations will cease at 5 PM, November 30, 2022.

**Steve Beste** informed the group that Horse Feathers (53VA) was in probate. Neil Huffman who has managed the airport's maintenance and run RC events at the airport for years told Steve that Chuck Tippet is interested in purchasing the airport. Currently the negotiations are in the early stages.

**Bob Chapman** volunteered to take possession of the club's meeting beverages for the winter to keep them from freezing. Bob will bring beverages to the Warrenton-Fauquier (HWY) airport for our Winter monthly meetings.

**Michael Bishton** shared that Capitol Area Flyers had a funeral Friday, November 4 for John Lee Ballantyne, the founder of the USUA, in Frederick, Maryland where he will be buried with his wife Diane.

### **Regular Reports**

*Secretary:* **JJ Campbell:** The minutes for October were accepted as published in the November newsletter.

*Treasurer and Membership Director:* **Fabian Georges** reported that the club's bank balance is \$3,217.46.

*Lost Griz Aerodrome Owner:* **Matt Christensen** did not attend the meeting but texted to ask that two vehicles be moved to the designated parking area. He also texted permission for Mark Barron to perform a demo flight of his new PPG.

### **New/Old Business**

None



### **Program**

**Mark Barron** gave a tutorial and demonstration of setting up a PPG for flight and then performed a demonstration flight around the aerodrome followed by questions and answers. It all was extremely interesting, educational, and fun.

### **50-50 Drawing**

There was no 50-50 drawing this month.

### **Adjourn**

*President, Steve Beste* adjourned the meeting at 11:57 AM.

### **Cook Out**

**Tim Loehrke** provided an assortment of pizzas to the delight of all the attendees.

Submitted by **JJ Campbell**, *Secretary*

## Service Providers

Recap our standing list of service providers:

- **PPG instructor and dealer:** Brian Goff, 703-963-7389  
[spin2329@gmail.com](mailto:spin2329@gmail.com)  
<https://www.paraflightnc.com/>
- **Aircraft instructor - CFI:** Pete Bastien, 703-568-5778
- **Aircraft instructor - light sport and seaplane:** Chuck Tippet, 540-905-5091
- **Gyroplane Instructor:** Frank Noe, 443-253-7681  
[frankcanfly@yahoo.com](mailto:frankcanfly@yahoo.com)  
<http://www.gyromajo.com/>
- **Machinist:** Luther Taylor, 540-222-3927
- **Welder:** Luther Taylor, 540-222-3927
- **A&P mechanic/IA:** JD Ingram, 513-388-6312
- **Light Sport Condition Inspections, Rotax Certified:** Tim Loehrke, 703-618-4005
- **A&P mechanic specializing in tube & fabric, based at CJR:** Air Knocker Aviation  
(Abe Makely, Saverio Gambassi)  
571-309-7023  
[airknockeraviation@gmail.com](mailto:airknockeraviation@gmail.com)

For more information on instructors, see <http://www.flyingclub1.org/instructors/instructors.php>



## Activities

### *Flying Club 1 Activities Schedule*

Club meetings will be held on the second Saturday of every month. Warm weather meetings from April through October will be held at the Lost Griz Aerodrome (7VG0). Please see the schedule below for the location of other meetings and information on events. Changes in time or location will be posted in this newsletter and on the Club website.

| Date                           | Activity  | Location  | Description  |
|--------------------------------|---|---|--|
| Saturday, December 3rd, 12-3pm | Holiday Party                                       | The terminal building at the <a href="#">Warrenton-Fauquier Airport</a> | Monthly meeting and Holiday Party                      |
| Saturday, January 14th, 11am   | Winter meeting                                      | The terminal building at the <a href="#">Warrenton-Fauquier Airport</a> | Program: TBD   |
| Saturday, February 11th, 11am  | Winter meeting                                      | The terminal building at the <a href="#">Warrenton-Fauquier Airport</a> | Program: TBD   |
| Saturday, March 11th, 11:00am  | Winter meeting                                      | The terminal building at the <a href="#">Warrenton-Fauquier Airport</a> | Program: TBD   |
| Saturday, April 8th, 11am      | Fly-in, club meeting, and cookout                   | Outdoors at <a href="#">7VG0</a>  | Club meeting, fly-in, and cookout at 7VG0              |
| Saturday, May 13th, 11am       | Fly-in, club meeting, and cookout                   | Outdoors at <a href="#">7VG0</a>  | Club meeting, fly-in, and cookout at 7VG0              |
| Saturday, June 10th            | 8:00am Poker Run<br>11:00am Fly-in and club meeting | Outdoors at <a href="#">7VG0</a>  | Poker Run<br>Club meeting, fly-in, and cookout at 7VG0 |
| Saturday, July 8th, 11am       | Fly-in, club meeting, and cookout                   | Outdoors at <a href="#">7VG0</a>  | Club meeting, fly-in, and cookout at 7VG0              |
| Saturday, August 12th, 11am    | Fly-in, club meeting, and cookout                   | Outdoors at <a href="#">7VG0</a>  | Club meeting, fly-in, and cookout at 7VG0              |
| Saturday, September 9th, 11am  | Fly-in, club meeting, and cookout                   | Outdoors at <a href="#">7VG0</a>  | Club meeting, fly-in, and cookout at 7VG0              |
| Saturday, October 14th, 11am   | Fly-in, club meeting, and cookout                   | Outdoors at <a href="#">7VG0</a>  | Club meeting, fly-in, and cookout at 7VG0              |

| Date                           | Activity                          | Location  | Description   |
|--------------------------------|-----------------------------------|---|---|
| Saturday, October 21st, 9am    | Club 1 Color Run Fly-out          | Meet at the Front Royal Airport for the run down to Luray               | Club 1 Color Run Fly-out: Front Royal to Luray            |
| Saturday, November 11th, 11am  | Fly-in, club meeting, and cookout | Outdoors at <a href="#">7VG0</a>  | Club meeting, fly-in, and cookout at <a href="#">7VG0</a> |
| Saturday, December 9th, 12-3pm | Holiday Party                     | The terminal building at the <a href="#">Warrenton-Fauquier Airport</a> | Monthly meeting and Holiday Party                         |

## Classifieds

Ads will be run twice and then dropped unless resubmitted, or renewed by telephone or e-mail. Please advise the editor: **Lucy Ooi** ([Ooi.Lucy@gmail.com](mailto:Ooi.Lucy@gmail.com)) when the ad is no longer needed.

---

### **Owner/Builder of Fisher Celebrity (biplane)**

#### **Looking for a Co-Owner**

All wood construction, Grove one-piece spring-aluminum main gear  
Powered by Rotec R2800, 7-cylinder radial engine, 100 horsepower

A tandem 2-place open cockpit biplane, cruises ~80 MPH  
Qualifies as light sport

Construction site & hangar, Lost Griz Aerodrome (7VG0)  
Project is ~80% complete

Project includes Grove Gear, Rotec R2800, Instruments, Flying Wires and all other major components. Total value ~\$35,000

A current co-owner is offering his half of this beautiful project  
(Entire aircraft sale – may be considered)

Call for additional info or to make an appointment to see this beautiful Taildragger!

Gil Coshland - (703) 618-3422

Asking \$17,500 for his co-ownership

Jim T. Hill - (703) 659-8336 (Co-owner)



## Membership Dues Policy

The period of membership is the calendar year: January through December.

Renewals can be sent in starting in October for the upcoming year. Members who have not paid their dues by the end of February will be dropped effective March 1 and will not receive the newsletter or the membership roster.

Dues are \$20 per year. But if more than one family member is active in the club, then a family membership covering both of them can be had for \$25. Please:

- Make your check out to **Flying Club 1**

- Mail it to **Fabian Georges**

P.O. Box 5322

Springfield, VA 22150

- Include a copy of the membership application that's attached at the end of this newsletter (and is available on the club [website](#)). That's our way of keeping your contact information up to date.

## MEMBERSHIP APPLICATION



New/Renewal: ☐ New ☐ Renewal

Type of membership: ☐ Individual ☐ Family (when more than one member of the family is active in the club)

Name(s): \_\_\_\_\_

Name To Go On Your Name Tag: \_\_\_\_\_

Street or PO Box: \_\_\_\_\_

City: \_\_\_\_\_ State: \_\_\_\_\_ Zip: \_\_\_\_\_

Telephone, Home: \_\_\_\_\_ Cell: \_\_\_\_\_ Work: \_\_\_\_\_

Spouse's Name: \_\_\_\_\_

Emergency Contact: Name: \_\_\_\_\_ Phone: \_\_\_\_\_

E-mail Address: \_\_\_\_\_

Aircraft Liability Insurance through: \_\_\_\_\_

Aircraft make and model: \_\_\_\_\_ N-Number (if any): \_\_\_\_\_

Pilot rating(s): \_\_\_\_\_

Club Activities or Services for Which You Volunteer: \_\_\_\_\_

Information from this application will be included in the club's membership roster which is distributed only to members.

### Instructions:

1. Fill out the above form.
2. Enclose a check made out to **"Flying Club 1"**.
3. Send the form and check (\$20 individual, \$25 family) to:

Fabian Georges, Treasurer  
P.O. Box #5322  
Springfield, VA 22150

## Flying Club 1 General Information

The Flying Club 1 is a nonprofit, recreational club dedicated to the sport of ultralight and light sport aircraft flying.

### 2022 CLUB OFFICERS AND DIRECTORS

President: Steve Beste 703-321-9110

Vice President: Allen Whatley 571-235-6978

Secretary: JJ Campbell 703-379-8930

Treasurer: Fabian Georges 714-661-8800

Director At Large: Pete Bastien 703-568-5778

Director At Large: Tim Loehrke 703-318-7896

Director At Large: Lucy Ooi 585-410-5573

### 2022 CLUB VOLUNTEER STAFF

Membership: Fabian Georges 714-661-8800

Club Artist: Jim Heidish 703-524-5265

Newsletter Editor: Lucy Ooi (“Wee”)

[Ooi.Lucy@gmail.com](mailto:Ooi.Lucy@gmail.com)

Web Master: Steve Beste,

[president@flyingclub1.org](mailto:president@flyingclub1.org)

*A club is only as good as the members who volunteer to support its activities. The following listed activities with the club require member support in varying amounts. Please indicate on your membership application the func-*

*tion(s) (can be more than one) you will support as a Club member. All active Club members are expected to participate. However, members who live some distance away and cannot attend meetings regularly may prefer to support functions associated with Club weekend activities.*

**ANNUAL DUES** (Jan 1-Dec 31) \$20.00. Family membership (typically husband and wife): \$25.00. A spouse who wishes to participate will please complete a membership application form.

**CLUB WEB SITE:** <http://flyingclub1.org>

**MEETINGS** are monthly, year-round. See the web site for dates and places.

**THE NEWSLETTER:** The newsletter is published by email on the first of every month.

**SUBMITTING ITEMS FOR THE NEWSLETTER** Members and non-members are encouraged to submit items for this newsletter. Send submissions to Lucy Ooi at [Ooi.Lucy@gmail.com](mailto:Ooi.Lucy@gmail.com) at least one week prior to the end of the month.

**If you are interested in joining the U.S. Ultralight National Organization go to their website for membership information at: [www.usua.org](http://www.usua.org)**

**Likewise, if you are interested in joining the U.S. Powered Paragliding Association, the National PPG Organization, go to their website for membership information at: [www.usppa.org](http://www.usppa.org)**